

Proposed River Thames Marina Development, near Wallingford

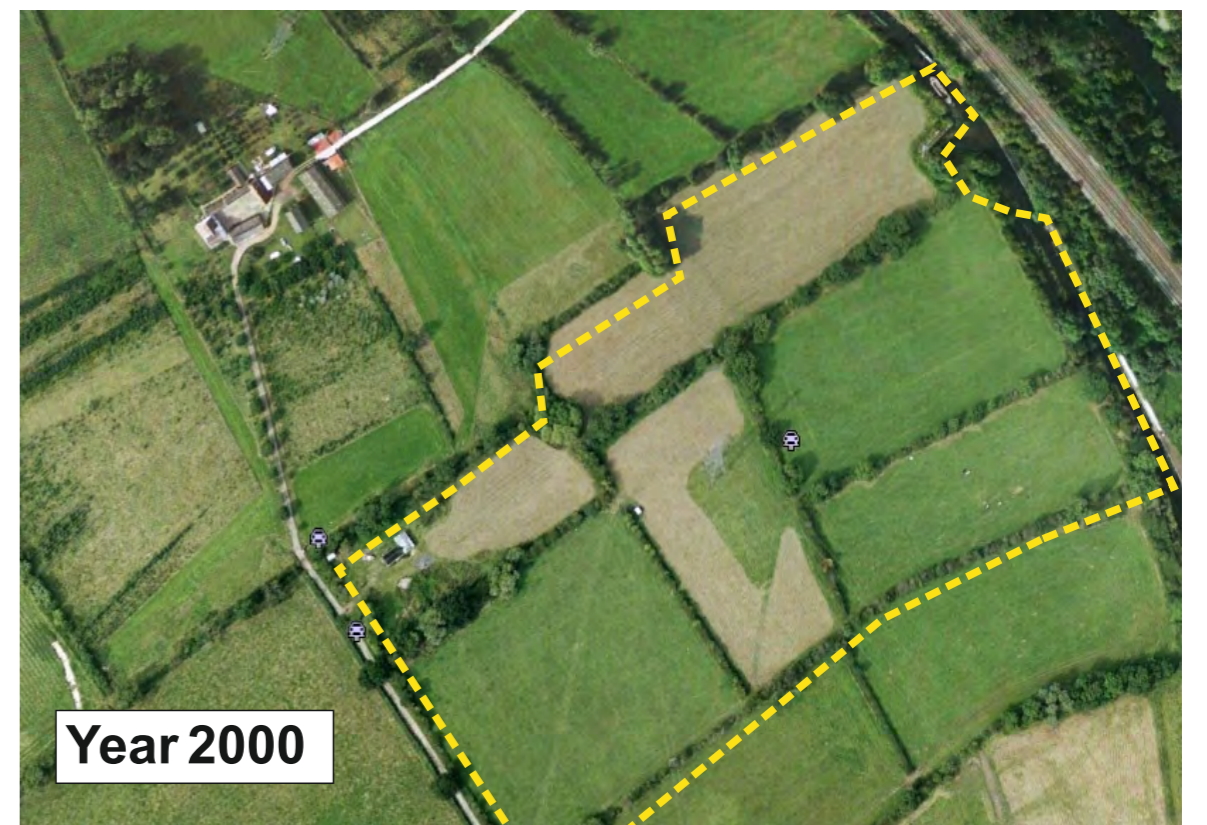
LONDON ROCK MARINA DEVELOPMENT PILLINGS LOCK MARINA, QUORN, LEICESTERSHIRE

This marina gained planning as a “greenfield site” and was constructed over a period of about 5 years by London Rock. Planning permission was granted by Leicestershire County Council and Charnwood Borough Council. All excavated sand and gravel was processed on site and sold in to the local construction market. The marina water body was a “sealed basin” that was directly linked to the Grand Union Canal.

This was considered as the most sustainable use of the excavated material and the income from the sale of minerals was re-invested in to the site infrastructure costs .

The final landscaping, engineering and construction of the completed marina basin development were all completed on time, within budget in full compliance of all legal and planning obligations.

This award winning marina site has been operating at high occupancy levels for about 10 years.



Evolution of Pillings Lock Marina
(Google Earth Images)

KEY FACTS

- Site area 9ha
- Number of berths up to 300
- Marina constructed over 5 years
- Extraction 340,000 tonnes of sand and gravel
- Sales output 140,000 tonnes per annum
- Import 150,000m³ engineering clay
- New access on to Grand Union Canal
- Development fully compliant with Planning Conditions & highways restrictions

